



# MOBILE CRUSHING AND SCREENING



UNICERT  
ISO 9001





## ABOUT

Borataş Machinery is a Turkish leading company which has been providing a variety of efficient solutions to the crushing and screening industry since 2003. Our knowledge and experience has enabled us to produce high quality stationary and mobile crushing and screening plants as well as concrete batching plant at an unbeatable price. With many crushing and screening plants currently running all around the globe, Borataş Machinery has grown to become an international company and brand.

This catalog presents our **tracked mobile crushers and screens**. Being hybrid these mobile units operate on either electricity or diesel. Accordingly, this means that there will not be **any heavy maintenance related to hydraulics**, like oil leakage, pump replacements, pipe breakage etc... . Moreover, diesel consumption is **20-40% less than hydraulic mobile units**.

Borataş Machinery owes its good reputation in the industry to its high quality after sales services along with the highly efficient equipment it offers. Our after sales services are described as free guidance and assistance during assembly by high qualified engineers and technicians, phone assistance for emergency matters and quick spare parts supply .

Notwithstanding the high number of local and national quarries using our machines many **international** quarries are currently operating thanks to our plants. Our plants are present in **Africa, Asia, Eastern Europe and Asia**.

### Our mobile equipment are ideal for :

- Mining Applications
- Quarrying
- Recycling applications such as asphalt and concrete
- Users in urban regions

### General characteristics of our mobile units :

- Easy to use
- Easy to maintain
- Safe to use
- High efficiency

### Product Range;

- Tracked Mobile Jaw Crushers
- Tracked Mobile Impact Crushers
- Tracked Mobile Cone Crushers
- Tracked Mobile Screens
- Tracked Mobile Scalpers





# TRACKED MOBILE CRUSHERS

## 04

### JAWTRACK JAW CRUSHER

Usually used in primary crushing in multistage crushing processes, Jawtrack jaw crushers are able to crush all types of natural stones and can be used in aggregate production, mining and recycling.

#### Models;

- BPJ106
- BPJ120



## 06

### ROCKTRACK IMPACT CRUSHER

Rocktrack impact crushers are used in primary and secondary crushing in multistage crushing processes. They are ideal for crushing low – medium hardness materials. They are typically utilized for aggregate production and recycling applications.

#### Models;

- BPK100
- BPK101
- BPK125
- BPK126



## 08

### COTRACK CONE CRUSHERS

Utilized for secondary and tertiary crushing in multistage crushing processes, Cotrack cone crushers are high capacity crushers able to crush medium – hard natural stones with perfect cubical shape. They are utilized in aggregate production and mining.

#### Models;

- BPC100
- BPC101
- BPC200
- BPC201





# JAWTRACK JAW CRUSHER



BPJ106

## JAWTRACK

Borataş Machinery's Jawtrack jaw crusher is the perfect combination of compactness, mobility and high performance featuring an imposing and high crushing capacity jaw crusher.

The Jawtrack series are used in a variety of applications such as mining, quarrying and recycling. These mobile machines are ideal for work in urban regions with limited surface area. Thanks to its dust reduction system, users will not face issues using our mobile crusher in cities.

Using a single toggle jaw, Jawtrack jaw crushers are high efficiency mobile crushers able to crush all types of natural stones from the hardest granites to more abrasive varieties. Moreover, they are also used for recycling by reducing materials such as asphalt, concrete and other construction materials.

### Ideal for

- Recycling applications such as asphalt and concrete
- Granite and natural stones with medium – hard level of hardness and high abrasivity
- Multistage crushing and screening applications
- Users in urban regions who are interested in compactness

### Specifications of Jawtrack Jaw Crushers

#### High Mobility

Its durable and heavy duty track system provides mobility on all types of grounds. This mobile jaw crusher is controlled with a remote which can either be wireless or wired and can go as fast as 1.2km/h.

#### Easy to Maintain

The PLC screen located in the control cabin notifies the user of occurring breakdowns. There are no issues related to hydraulic systems since the machine operates on electricity and diesel. Maintenance and part replacements are very simple quick.

#### High Capacity Crushing

Jawtrack jaw crusher is equipped with reliable and greatly efficient jaw crushers from the BCK series. These crushers are able to crush all types of natural stones at high output even at tight opening settings.





## JAWTRACK SERIES

- Simple transportation, quick setup, high performance



### Standard Specifications

- Featuring highly efficient jaw crusher from BCK series
- By-pass chute with hydraulically foldable side conveyor
- Bunker with hydraulically foldable back and sides
- Control via wireless/wired remote
- Electric-Diesel power source
- PLC control system
- Dust reduction system
- Drum motors for conveyors
- Vibrating feeder with grizzly screen

### Technical Specifications

Approx. Feed. Capacity	100 - 250 t/h
Opening Size	1.000 x 600 mm
Weight	40.000 kg
Diesel Engine Power	250 kVA

### Options

- Metal separating magnet
- Hardox armoured bunker

## BPJ 106



### Standard Specifications

- Featuring highly efficient a jaw crusher from BCK series with high crushing capacity
- By-pass chute with hydraulically foldable side conveyor
- Bunker with hydraulically foldable back and sides
- Control via wireless/wired remote
- Electric-Diesel power source
- PLC control system
- Dust reduction system
- Drum motors for conveyors
- Vibrating feeder with grizzly screen

### Technical Specifications

Approx. Feed. Capacity	150 - 350 t/h
Opening Size	1.200 x 700 mm
Weight	50.000 kg
Diesel Engine Power	275 kVA

### Options

- Metal separating magnet
- Hardox armoured bunker

## BPJ 120







# ROCKTRACK IMPACT CRUSHER

BPK100



## ROCKTRACK

Rocktrack impact crushers are highly efficient mobile crushers with excellent reduction ratios and cubical shaping abilities. This mobile unit is used for aggregate production purposes and recycling.

In order to meet users requirements, our mobile impact crusher can be supplied as Standard or customized by adding multiple options.

Furthermore, a screen can be added to the same chassis with the crushing unit for a more distinct and precise end product.

### Ideal for

- Recycling applications such as asphalt and concrete
- Limestone and natural stones with medium hardness
- Multistage crushing and screening applications
- Users who wants a precise end product

### Specifications of Rocktrack Impact Crushers

#### Mobility Combined with Productivity

The stand-out feature of this mobile impact crusher is its mobility combined with high productivity per hour. Units are fully self-contained on their tracked undercarriage and can easily be driven off a trailer by one operator and quickly put to work, with excellent capability for moving directly to materials.

#### Fuel Efficiency and Electric Power

Not only does electric power reduce the carbon footprint, it can save contractors up to 30 percent on fuel costs when compared to the diesel-hydraulic drive systems. Moreover, hybrid models of mobile crushers are more and more demanded considering the importance of fuel efficiency, rising transport and operational costs and the global focus on reducing emissions.

#### Maintenance and Ease of Use

Rocktrack impact crushers start up is as easy as literally pressing one button. Driving the unit is done with a control remote which is very simple to use. The PLC screen in the panel shows all the main components of the machines. In case of breakdown, the screen will point out the breakdown location for inspection. Parts subjected to wear are easily accessible and are replaced within a short period of time.

#### Reliability

Thanks to many years of experience in designing, engineering and manufacturing crushers, combined with excessive quality testing and high quality components, the Rockwell mobile impact crusher is a reliable machine which has proven to always deliver a superior product at a high output.



## ROCKTRACK SERIES

- Simple transportation, short term installation, different application possibilities, high efficiency.



### BPK 100

#### Standard Version

- Featuring highly efficient impact crusher from PDK series
- By-pass chute with hydraulically foldable side conveyor
- Bunker with hydraulically foldable back and sides
- Wireless and wired remote control
- Electric-Diesel power source
- PLC control system
- Dust reduction system
- Electrical drum motor for conveyors
- Vibrating feeder with grizzly screen

#### Technical Specifications

Aprox. Feed. Capacity.	100 - 180 t/h
Feed. Opening	1.050 x 900 mm
Weight	36.000 kg
Diesel Engine Power	363 kVA

#### Options

- Metal separating magnet
- Hardox armoured bunker
- Rotor type



### BPK 101

#### Standard Version

- Featuring highly efficient impact crusher from PDK series
- By-pass chute with hydraulically foldable side conveyor
- Bunker with hydraulically foldable back and sides
- Wireless and wired remote control
- Electric-Diesel power source
- PLC control system
- Dust reduction system
- Electrical drum motor for conveyors
- Vibrating feeder with grizzly screen
- **Single deck screen**
- **Return belt**

#### Technical Specifications

Aprox. Feed. Capacity.	100 - 180 t/h
Feed. Opening	1.050 x 900 mm
Weight	42.000 kg
Diesel Engine Power	363 kVA
Screen Size	1.300 x 3.000 mm

#### Options

- Metal separating magnet
- Hardox armoured bunker
- Rotor type
- **Polyurethane mesh**
- **Hardox armoured perforated sheet**



### BPK 125

#### Standard Version

- Featuring highly efficient impact crusher from PDK series
- By-pass chute with hydraulically foldable side conveyor
- Bunker with hydraulically foldable back and sides
- Wireless and wired remote control
- Electric-Diesel power source
- PLC control system
- Dust reduction system
- Electrical drum motor for conveyors
- Vibrating feeder with grizzly screen

#### Technical Specifications

Aprox. Feed. Capacity.	150 - 250 t/h
Feed. Opening	1.300 x 850 mm
Weight	55.000 kg
Diesel Engine Power	500 kVA

#### Options

- Metal separating magnet
- Hardox armoured bunker
- Rotor type



### BPK 126

#### Standard Version

- Featuring highly efficient impact crusher from PDK series
- By-pass chute with hydraulically foldable side conveyor
- Bunker with hydraulically foldable back and sides
- Wireless and wired remote control
- Electric-Diesel power source
- PLC control system
- Dust reduction system
- Electrical drum motor for conveyors
- Vibrating feeder with grizzly screen
- **Single deck screen**
- **Return belt**

#### Technical Specifications

Aprox. Feed. Capacity.	150 - 250 t/h
Feed. Opening	1.300 x 850 mm
Weight	61.000 kg
Diesel Engine Power	500 kVA
Screen Size	1.500 x 3.200 mm

#### Options

- Metal separating magnet
- Hardox armoured bunker
- Rotor type
- **Polyurethane mesh**
- **Hardox armoured perforated sheet**





# COTRACK CONE CRUSHER

BPC100



## COTRACK

Cotrack cone crusher is an exceptional mobile crusher able to provide large reductions ratios and an excellent cubical shape at high output capacity. These units are used in a variety of applications such as aggregate crushing, mining and recycling. Moreover, these machines are ideal for contractors or aggregate producers working in restricted areas and/or urban regions thanks to its compactness, mobility, and dust reduction system .

Using Sandvik cone crushers as the main crusher of the unit, the mobile cone crushers of Borataş Machinery are high performing crushers able to crush medium to hard natural stones, even those with abrasive varieties.

As some contractors and users requirements are precise and demand flexibility to be optimally met, Cotrack cone crushers come with multiple sizes and features and are supplied as Standard or customized versions.

### Ideal for

- Granite and natural stones with medium-hard level of hardness and high abrasivity
- Multistage crushing and screening applications
- Users in urban regions who are interested in compactness
- Secondary or tertiary crushing

### Specifications of Cotrack Cone Crusher

#### High Capacity Crushing and Shaping

Borataş Machinery's mobile cone crusher provides high capacity crushing even at tight settings. its main Sandvik crusher delivers outstanding performance in both crushing and shaping to produce a superior high quality end product.

#### Maintenance and Durability

Cotrack cone crushers are designed to be durable machines with a long service life due to the robustness of their frame and their wear resistant components. Although maintenance needs of this mobile unit are relatively low, parts subjected to wear are easily accessible and can be replaced within a short period of time. Despite the easiness of maintenance, Borataş Machinery is investing heavily in making maintenance very safe and secure for users.

#### Cost Effectiveness

Considering the low fuel consumption, the low need of maintenance and high productivity, Cotrack cone crushers operate at the lowest overall cost possible. The optimal cost effectiveness in conjunction with its high uninterrupted uptime and high capacity crushing makes the mobile unit very profitable.





## COTRACK SERIES

- Powerful and efficient crusher, reliable, simple transportation.



BPC 100

### Standard Version

- Featuring highly efficient Sandvik cone crusher CH430
- Hydraulically adjustable bunker feeder
- Control via wireless/wired remote
- Electric-Diesel power source
- PLC control system
- Dust reduction system
- Drum motors for conveyors
- Belt feeder

### Technical Specifications

<b>Aprox. Feed. Capacity</b>	100 - 180 t/h
<b>Feed. Opening</b>	d = 900 mm
<b>Weight</b>	35.000 kg
<b>Diesel Engine Power</b>	275 kVA

### Options

- Metal separating magnet
- Hardox armoured bunker
- Apron feeder
- Medium fine cone crusher
- Extra coarse cone crusher



BPC 101

### Standard Version

- Featuring highly efficient Sandvik cone crusher CH430
- Hydraulically adjustable bunker feeder
- Control via wireless/wired remote
- Electric-Diesel power source
- PLC control system
- Dust reduction system
- Drum motors for conveyors
- Belt feeder
- **Single-dual screen**
- **Return belt**

### Technical Specifications

<b>Aprox. Feed. Capacity</b>	100 - 180 t/h
<b>Feed. Opening</b>	d = 900 mm
<b>Weight</b>	41.000 kg
<b>Diesel Engine Power</b>	275 kVA
<b>Screen Size</b>	1.300 x 3.000 mm

### Options

- Metal separating magnet
- Hardox armoured bunker
- Apron feeder
- Medium fine cone crusher
- Extra coarse cone crusher
- Polyurethane Mesh
- Hardox armoured perforated sheet



BPC 200

### Standard Version

- Featuring highly efficient Sandvik cone crusher CH440
- Hydraulically adjustable bunker feeder
- Control via wireless/wired remote
- Electric-Diesel power source
- PLC control system
- Dust reduction system
- Drum motors for conveyors
- Belt feeder

### Technical Specifications

<b>Aprox. Feed. Capacity</b>	150 - 250 t/h
<b>Feed. Opening</b>	d = 1.100 mm
<b>Weight</b>	50.000 kg
<b>Diesel Engine Power</b>	450 kVA

### Options

- Metal separating magnet
- Hardox armoured bunker
- Apron feeder
- Medium fine cone crusher
- Extra coarse cone crusher



BPC 201

### Standard Version

- Featuring highly efficient Sandvik cone crusher CH440
- Hydraulically adjustable bunker feeder
- Control via wireless/wired remote
- Electric-Diesel power source
- PLC control system
- Dust reduction system
- Drum motors for conveyors
- Belt feeder
- **Single-dual screen**
- **Return belt**

### Technical Specifications

<b>Aprox. Feed. Capacity</b>	150 - 250 t/h
<b>Feed. Opening</b>	d = 1.100 mm
<b>Weight</b>	56.000 kg
<b>Diesel Engine Power</b>	450 kVA
<b>Screen Size</b>	1.500 x 3.200 mm

### Options

- Metal separating magnet
- Hardox armoured bunker
- Apron feeder
- Medium fine cone crusher
- Extra coarse cone crusher
- Polyurethane Mesh
- Hardox armoured perforated sheet









# MOBILE SCREENS



## 12

### CLASSTRACK SCREEN

Classtrack screens are used for high end product classification at high capacity. Such mobile screens are ideal in small and large aggregate production sites and quarries as well as in mining applications.

#### Models;

- BPE102
- BPE103

## 14

### SCALTRACK SCALPING SCREEN

Scaltrack scalping screens are high quality mobile scalpers able to accurately separate materials at high output. They provide excellent productivity in aggregate production, recycling and mining.

#### Models ;

- BPS100
- BPS101







# CLASSTRACK SCREENS

BPE103



## CLASSTRACK

Classtrack mobile screens are the ideal way to optimally screen materials at the lowest operation cost while still benefiting from mobility and compactness. These mobile units are typically used in aggregate production, quarries, mining, and recycling. They are ideal for users looking for mobility, compactness and optimal screening at high capacity.

The mobile screens are usually fed by a crusher in a multistage crushing plant or an excavator for simple material screening. They are manufactured with either two or three decks depending on the user's requirements.

### Specifications of Classtrack screen

#### High Production Capacity

The increased operational efficiency, Optimal screening and extremely low downtime of Classtrack screen is due to the perfect interaction of all its high quality components, coupled with many extensive tests in quarries.

#### Maintenance and Durability

The wear resistant components and robust chassis is what makes Classtrack mobile screens very durable. In case of a breakdown, the PLC screen located in the panel will point to

the location of the fault. The parts subjected to wear are easily accessible and can be replaced or repaired within a short period of time which lowers considerably the downtime of the machine.

#### Flexibility

As flexibility is more and more demanded by users, Borataş Machinery's mobile screens are supplied as Standard or tailored versions in order to meet all the process requirements.

The mobile screen can come as a dual-deck or triple-deck screen with different types of meshes, such as normal steel screen mesh, perforated sheet or polyurethane. Washing options can also be added if required.

#### Cost Effectiveness

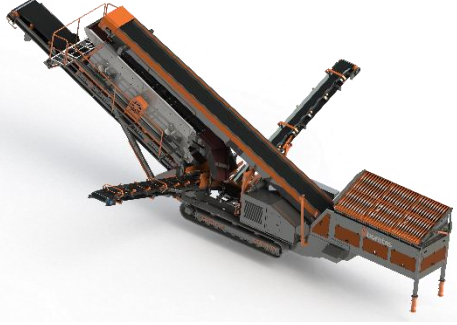
The quick set-up time, low downtime, low fuel consumption and low overall cost all together makes Classtrack screens very cost effective mobile units. Accordingly, Its high productivity, and high uninterrupted uptime increases profits exponentially.





## CLASSTRACK SERIES

- Simple transportation, quick setup, high performance



### BPE 102

#### Standard Version

- Dual deck screen
- Electric-Diesel power source
- Hydraulically foldable belt
- Wireless remote
- Bunker with grid
- PLC screen
- Drive Motors for conveyor
- Changeable mesh

#### Options

- Washing option
- Polyurethane mesh
- Hardox Armoured Perforated sheet

#### Technical Specifications

<b>Aprox. Feed. Capacity</b>	150 - 200 t/h
<b>Screen Size</b>	1.500 x 5.500 mm
<b>Weight</b>	32.000 kg
<b>Diesel Engine Power</b>	110 kVA



### BPE 103

#### Standard Özellikler

- Triple deck screen
- Electric-Diesel power source
- Hydraulically foldable belt
- Wireless remote
- Bunker with grid
- PLC screen
- Drive Motors for conveyor
- Changeable mesh

#### Options

- Washing option
- Polyurethane mesh
- Hardox Armoured Perforated sheet

#### Technical Specifications

<b>Aprox. Feed. Capacity</b>	150 - 200 t/h
<b>Screen Size</b>	1.500 x 5.500 mm
<b>Weight</b>	34.000 kg
<b>Diesel Engine Power</b>	110 kVA

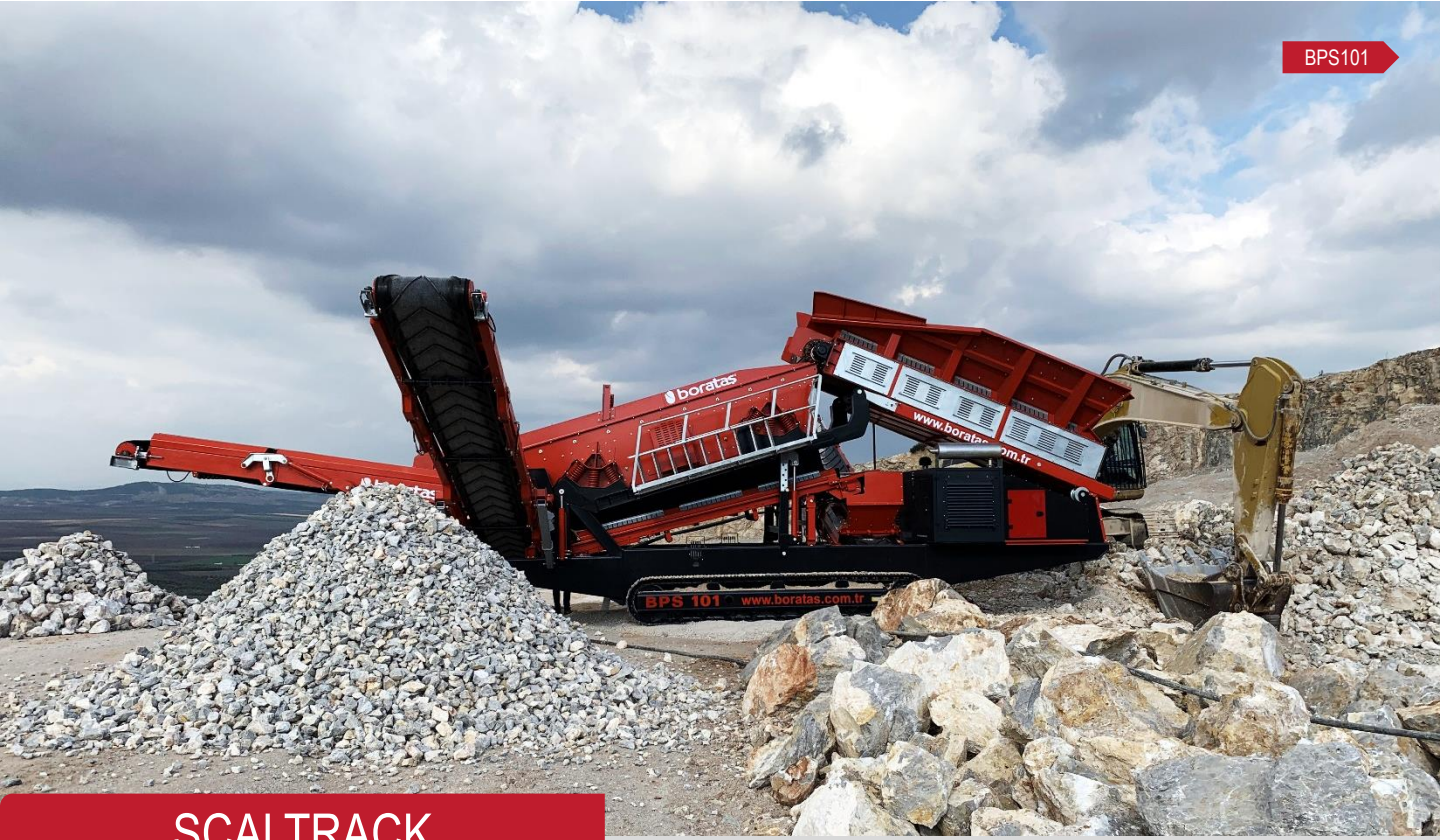






# PALETLİ SCALPER ELEKLER

BPS101



## SCALTRACK

Scaltrack scalping screens are a combination of extremely accurate classification of end product and high output. Its cost effectiveness is justified by its low fuel consumption, low operating and maintenance costs as well as high capacity.

Typically used to separate the products between the primary and secondary crusher, Scaltrack scalping screens are ideal for primary scalping and natural sand applications.

Once the material is fed, either by an excavator or a primary crusher, the feeder carries the material to the two deck screen which separates it to three types. Each type of product is then lifted by one of the three conveyors.

### Specifications of Scaltrack Scalpig Screen

#### Quick Set-Up Time

Set-up time has never been easier and quicker with Scaltrack mobile scalping screens. Switching from transport to operating position only necessitates unfolding the foldable conveyors, setting the right screen angle and finally raising the feeder to the right position.

#### Easy to Operate and Maintain

Simplicity has always been key. Simplifying the use of such a complex machine as Scaltrack mobile scalping screens is all we are about. Controls are done through a wireless or wired remote while turning on these mobile units is as easy as pushing the start button.

In case of breakdown, the PLC screen points to the location of the breakdown to be repaired. Moreover, no maintenance related to hydraulics, no oil leakage nor pump replacements are needed. Every replaceable part is easily accessible and can be replaced within a short period of time.

#### Flexibility

Being used in multiple applications such as recycling or normal aggregate pre-screening, Scaltrack scalping screen has a variety of options which can be added or removed giving it extreme flexibility and adjustability.

The feeding is done either by a feeding belt or an apron feeder. The latest provides reliability and high capacity in the most demanding quarry applications, moreover, the metallic nature of the apron feeder prevents material sticking. Screening is done either by grizzlies, grizzly finger bars, or hexagonal holes. Steel screen mesh can be added as an option.





## SCALTRACK SERIES

- Simple transportation, quick setup, high performance



BPS 100

### Standard Version

- Dual deck scalper screen
- Electric-Diesel power source
- Hydraulically foldable belts
- Wireless remote
- Belt feeder
- PLC screen
- Drive Motors for conveyor
- Changeable mesh

### Options

- Apron Feeder
- Polyurethane Mesh
- Hardox Armoured Perforated sheet
- Grizzly Deck

### Technical Specifications

<b>Approx. Feed. Capacity</b>	100 - 300 t/h
<b>Screen Size</b>	1.300 x 3.600 mm
<b>Weight</b>	23.000 kg
<b>Diesel Engine Power</b>	88 kVA



BPS 101

### Standard Özellikler

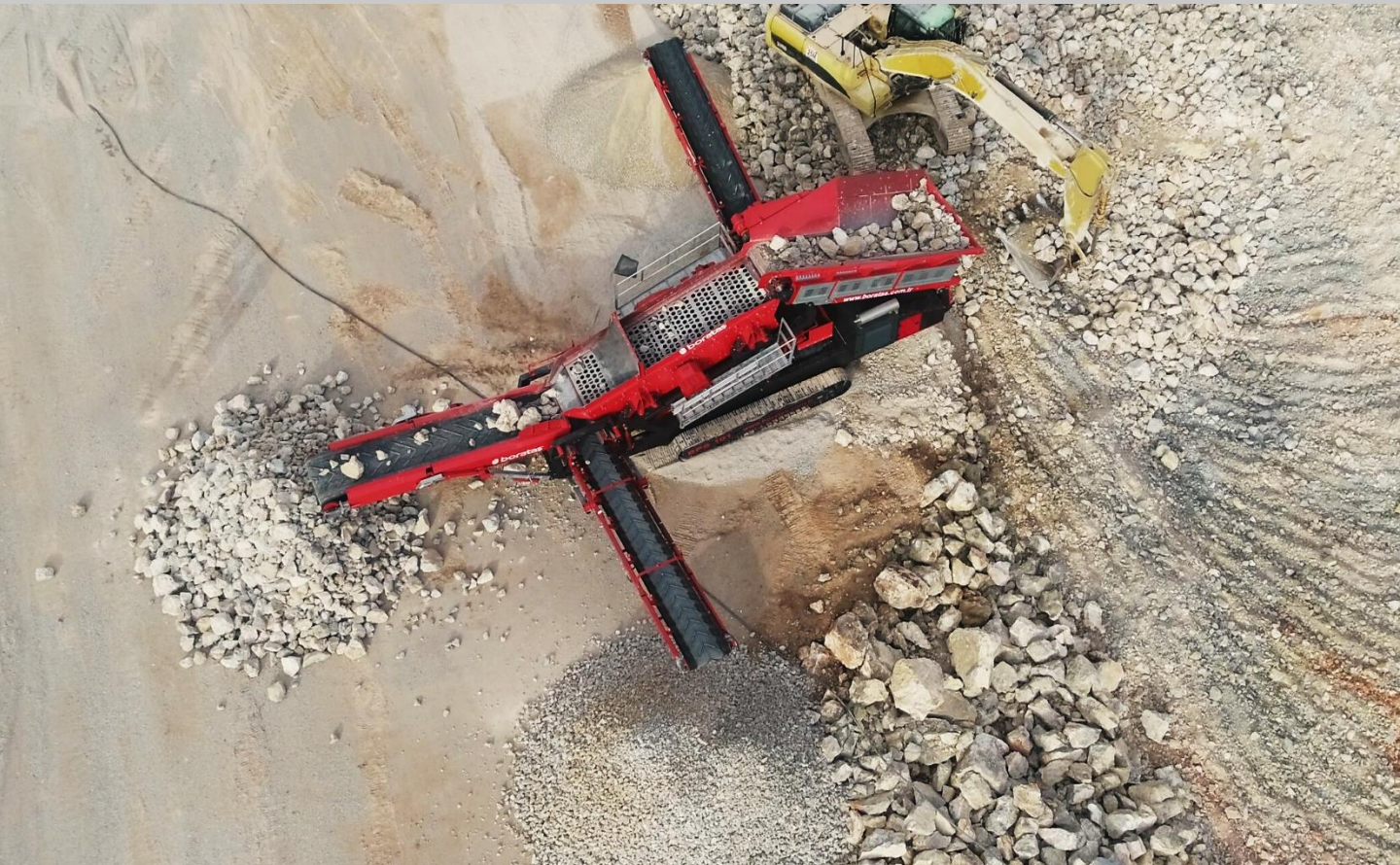
- Dual deck scalper screen
- Electric-Diesel power source
- Hydraulically foldable belts
- Wireless remote
- Belt feeder
- PLC screen
- Drive Motors for conveyor
- Changeable mesh

### Options

- Apron Feeder
- Polyurethane Mesh
- Hardox Armoured Perforated sheet
- Grizzly Deck

### Technical Specifications

<b>Approx. Feed. Capacity</b>	250 - 400 t/h
<b>Screen Size</b>	1.500 x 4.500 mm
<b>Weight</b>	33.000 kg
<b>Diesel Engine Power</b>	110 kVA







*POWER IS CONTINUITY*



Web

[www.boratas.com.tr](http://www.boratas.com.tr)  
[www.mobilecrushersturkey.com](http://www.mobilecrushersturkey.com)

Facebook  
Instagram  
Linkedin

/boratasCrushers  
/boratas!machinery  
Boratas Machinery

Adress

Bağyurdu Organize Sanayi Bölgesi  
Anadolu Cad. No:8  
Kemalpaşa / İZMİR

Telephone  
Fax  
e-mail

+90 232 853 85 95  
+90 232 853 81 39  
[sales@boratas.com.tr](mailto:sales@boratas.com.tr)